
FM 12 Cartridge Air Filtration System

Industrial air filtering units FM 12 are designed for industrial heavy around-the-clock use with very simple and economical maintains.



Industrial Air Filtering units FM 12 are intended to filter both metallic and non-metallic dust particles and aerosols, also welding operations, surface grinding and metal cutting, dust generating processes, toner dust, mist and vapor collection, industrial grinding operations, fiberglass sanding & deburring, CNC milling, EDM milling, powder mixing and much more.

DESCRIPTION

Cartridge industrial filtration unit FM12 consists of 3 basic components:

- Dust container (metallic rack with dust reservoir)
- Filtration chamber with cartridge filters
- Jet cleaning chamber with *automatic reverse pulse cleaning*

There are 16 cartridge filters mounted inside the filtration chamber of total surface 250 m². The cartridges are supplied in several variations according to the type of pollutant that has to be retained.

The automatic regeneration (cleaning) of cartridges is conducted during full operation mode by controlled pulses of compressed air according to adjustable timing schedule. The operating is ensured by electronic control unit. The appropriately sized fan can be optionally fitted.

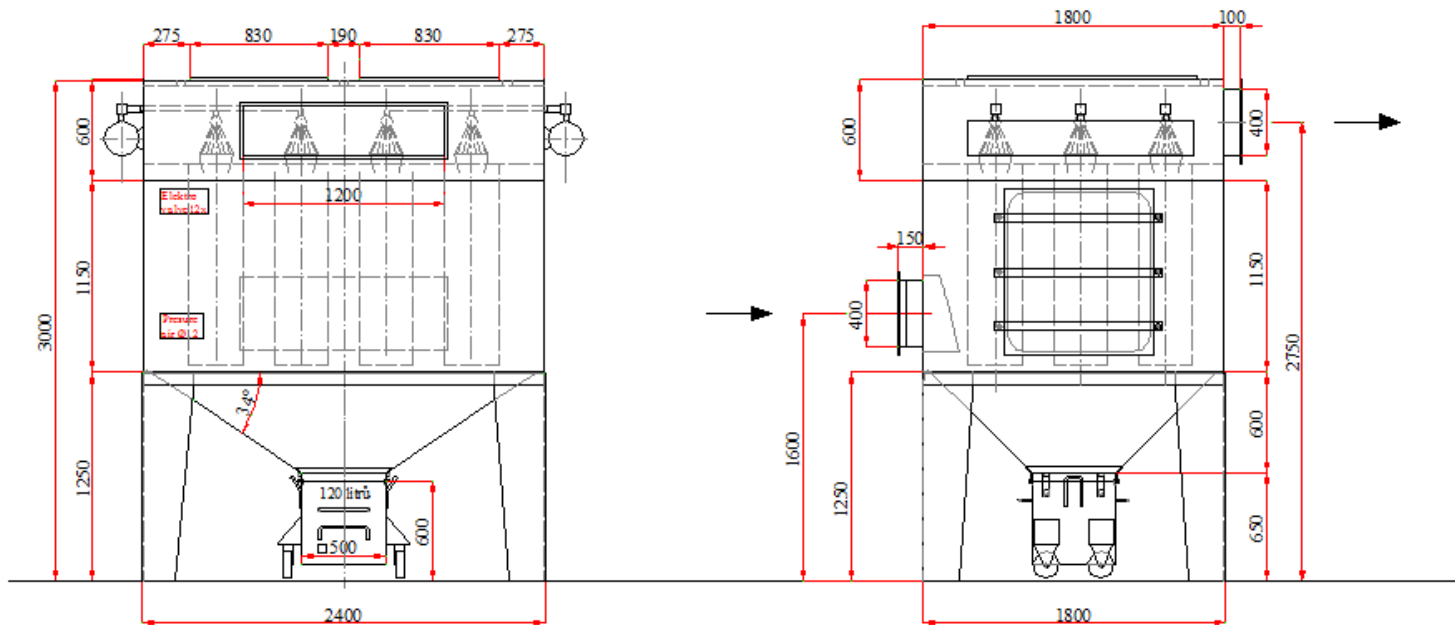
TECHNICAL CHARACTERISTICS

<i>Recommended air volume flow</i>	12.000 m ³ /hour
<i>Initial pressure loss</i>	about 350 Pa (depends on type of cartridges)
<i>Operating pressure loss</i>	about 1500 Pa (depends on type of pollutant)
<i>Overall filtration surface</i>	180 m ²
<i>Basic dimensions (see fig.2):</i>	
<i>Base</i>	2400 x 1800 mm
<i>Height</i>	2950 mm
<i>Inlet opening size</i>	Ø560 mm
<i>Outlet vent size</i>	Ø560 mm
<i>Dust container volume</i>	2 x 120 l or custom made 1x 320 l

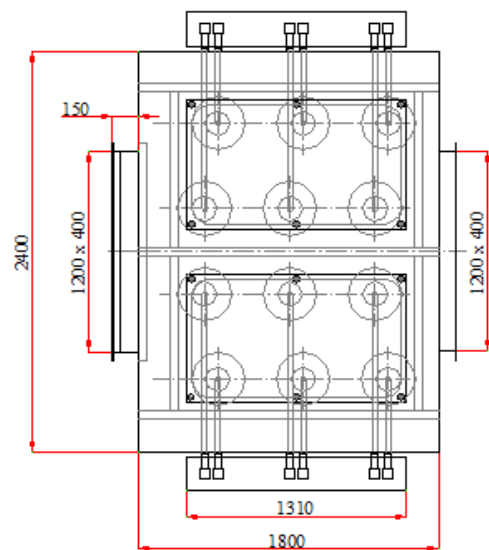
The size of inlet opening, outlet vent and the type and size of discard container could be modified up to the customer requirements.

The central exhaustion pipe can be connected or it can be fitted with its own fan unit of following recommended specification:

Q=16.000 m³/h, p=3.900 Pa, U=3x400/230V, P=30 kW, n=1400 rpm.



P



Filtration unit FM 16 is supplied as assembled functional unit placed on the transportation rack (pallet) properly fastened to it and wrapped in protective PE film. For transportation should be secured in vertical position. The unit is supplied without spare parts which could be ordered separately at any time.

More detailed information can be obtained at:

VZDUCHOTECHNIK s.r.o., Tovární ul. 548, 463 31 Chrastava, Czech Republic

el: +420-(0)48-5143114, fax: +420-(0)48-5143103,

vzduchotechnik@vzduchotechnik.cz www.vzduchotechnik.com