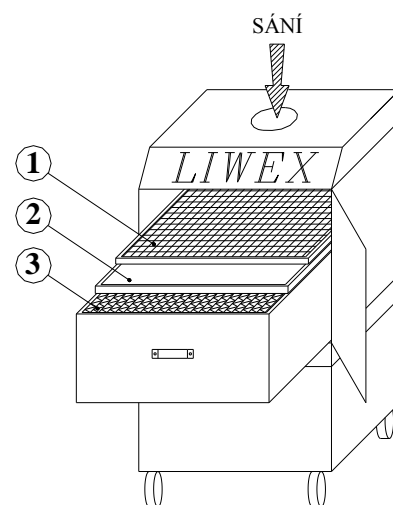

PORTABLE WELDING SMOKE PURIFICATION UNIT - LIWEX

Portable welding smoke purification unit LIWEX is used for filtration of smoke emission and dust during the welding, polishing, cutting, crunching. It is designed for industrial heavy around-the-clock use in any metal processing workshops.

LIWEX eliminates the smoke emission and other disposals from any basic industrial metal processing. Air is fully recovered back into the original room of the workshop. This provides very economical solution for the air filtration.



CONFIGURATION



- 1 - PREFIL
- 2 - KOFIL
- 3 - WELFIL

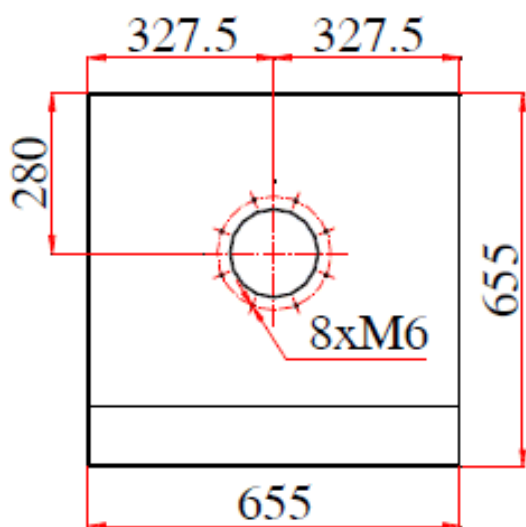
DESCRIPTION

There are 3 filtration insert modules (PREFIL, KOFIL, WELFIL) and 5 meters electrical supply cord as well as the maintenance and operational manual included with each Exhauster unit.

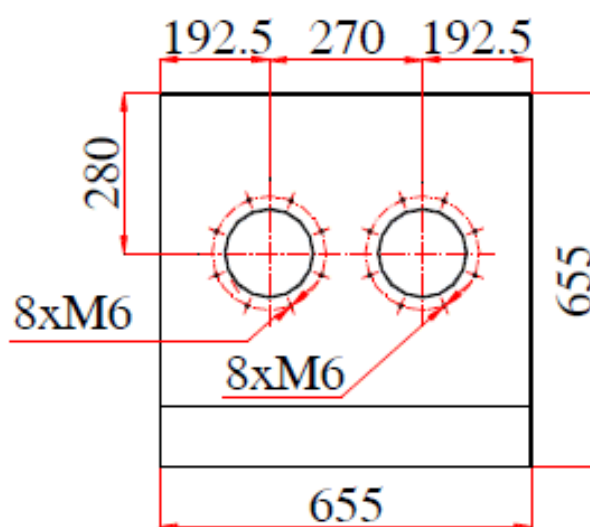
Absorption SOFIL is not a standard part of the delivery and can be ordered separately.

All exhauster units are carefully tested prior to expedition and are packaged in non-returnable wooden lathwork. The transportation does not require any specific measures. Stored should be in dry indoor locations.

The exhauster is based on the cabin type corpus with freely positional wheels for easy manipulation. The air is accepted by the intake pipes or special swivel arm with intake hood. The air travels first through the metallic pre-filter insert (Kofil), then is propelled through a fabric pre-filter (Prefil) and finally comes out over a high efficiency mechanical filter (Welfil). It is possible to install also optional extra filtration module „Sofil“ which contains the adsorbent medium. The unit is equipped with an electronical indicator controlling the stage of filters pollution and proper fan function.

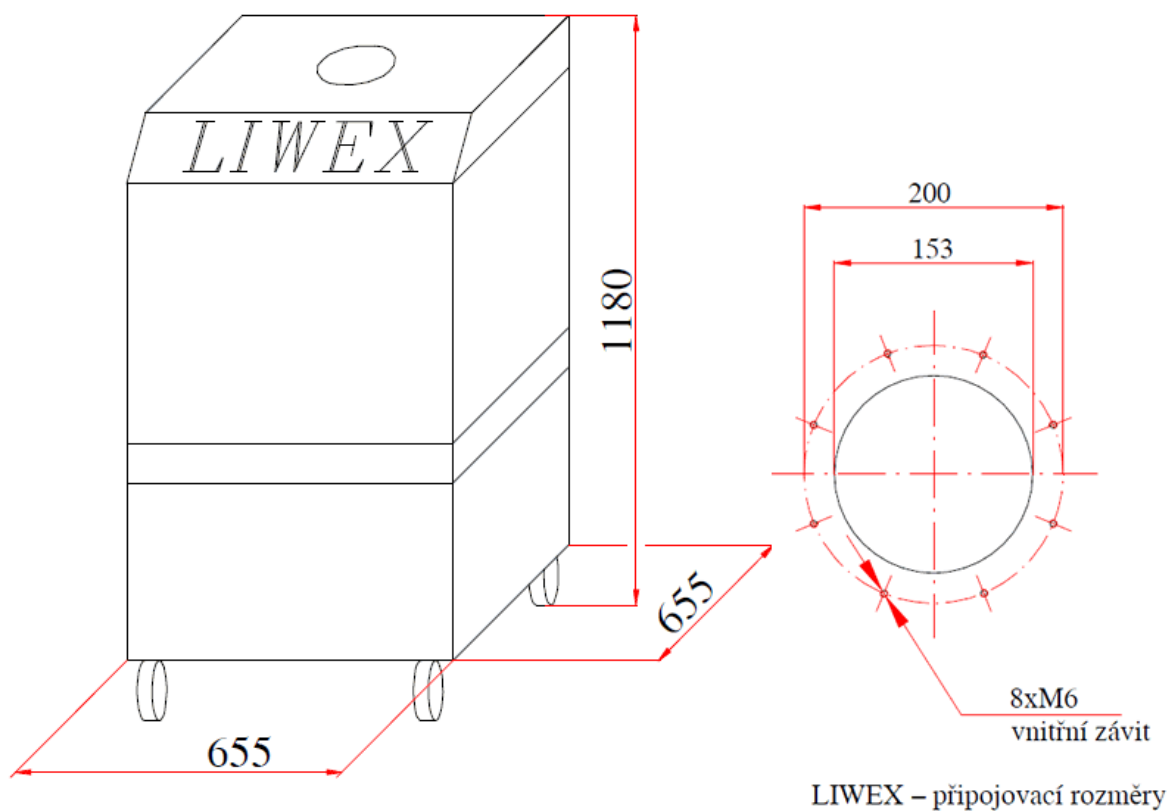


LIWEX 9, 12



LIWEX 9/2, 12/2

Measurements in millimeters / mm



If there is a need for elimination of the welding fumes from two different locations, we supply the top desk with 2 intake apertures (models LIWEX 9/2 and LIWEX 12/2). The air suction performance would then distribute according to the intake conducts resistance ratio.



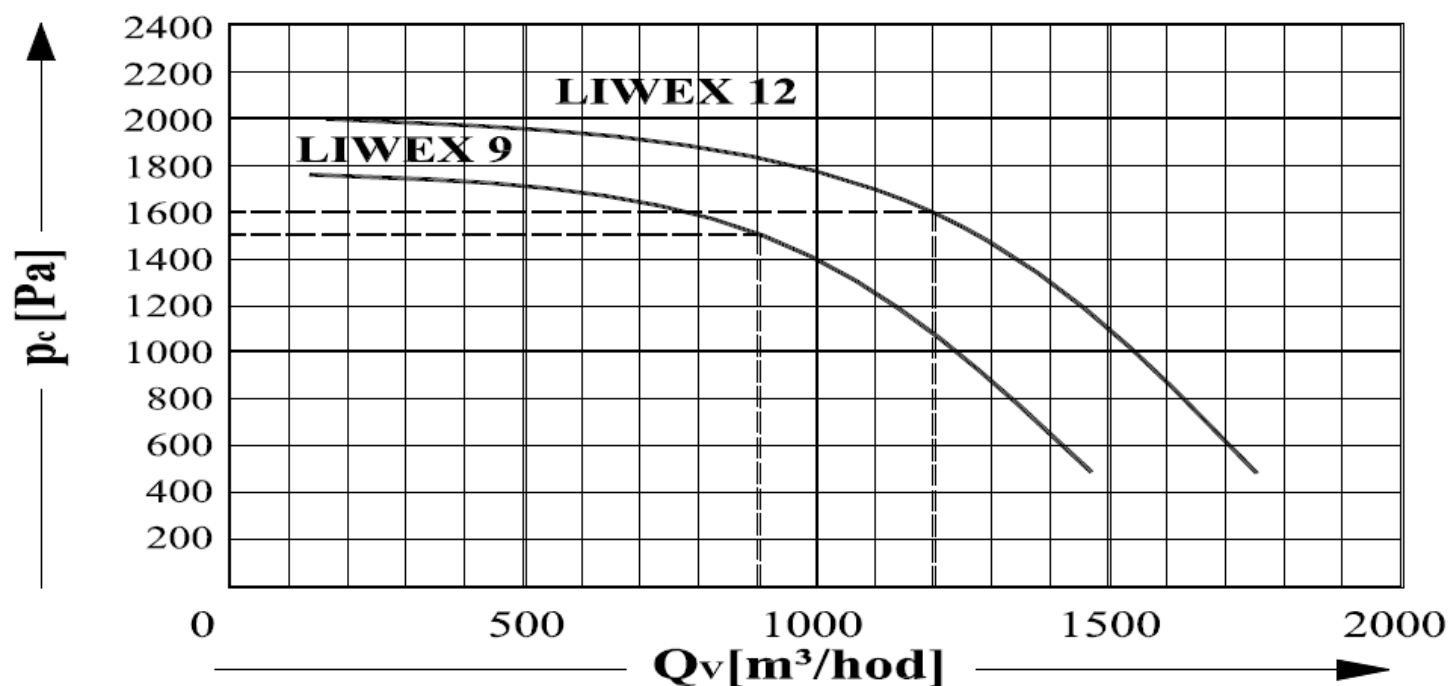
BASIC TECHNICAL DATA

Exhauster Model		LIWEX 9	LIWEX 9/2	LIWEX 12	LIWEX 12/2
Air flow volume	Q_v (m ³ /h)	900		1200	
Total suction pressure	p_c (Pa)	1800		1500	
Total filtration surface of Welfil	S (m ²)	21		21	
Separation efficiency 0,3 microns	%	85 – 98		85 - 98	
Electromotor output	P (kW)	1.1		1.5	
Electric current	I (A)	2.6		3.3	
Catalogue part number		131 299	131 301	140 037	140 038

Weight 130 kg *If the intake swivel arm is fitted (see catalogue for accessory items) and the distance from the pollution source from the suction hood is up to 300 mm, efficiency of filtration exceeds 96%.*
Power grid supply 3 x 380 V, 50 Hz
Noise level 70 - 72 dB(A)
Ingress protection IP 20

LIWEX exhauster was approved for operation by authorized State Technical Testing Institute.

AIR FLOW OUTPUT CHARACTERISTICS



ACCESSORIES

With internal reference KC 12 7634 we supply as optional accessory following items:

- 1. Intake swivel arm*
- 2. Pipe bend*
- 3. Flexible hose*
- 4. Connector*

As an extra you may order also adsorbing filter insert „SOFIL“. All the filter inserts applicable for LIWEX Exhauster are listed under separate part numbers:

KC 12 5255 Filtration insert WELFIL 65

KC 12 5256 Filtration insert KOFIL 6C

KC 12 5257 Filtration insert PREFIL 6



More detailed information can be obtained at:

VZDUCHOTECHNIK s.r.o., Tovární ul. 548, 463 31 Chrastava, Czech Republic

el: +420-(0)48-5143114, fax: +420-(0)48-5143103,

vzduchotechnik@vzduchotechnik.cz www.vzduchotechnik.com